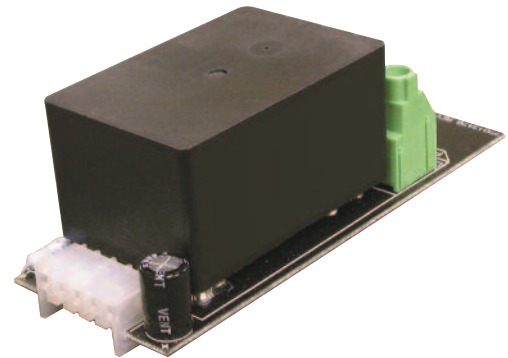


2-Pole Relay Board

- 2 pole lighting control relay
- Easy installation
- Controls 208/240/480 circuits
- UL listed
- Available with Normally Open (N.O.) contacts
- Mounts directly in panel
- Requires only one space



Overview

The 2 Pole Relay (AP3-2PR) Board mounts directly in Apprentice 3 lighting control panels and is designed to control 208/240/480 VAC loads. This two pole relay assembly mounts directly in place of the 1PR single pole relay board. The relays are electrically held, are available in N.O. (normally open) contacts, and can be mixed in the lighting controller with 1PR relay boards. These relay boards are easily mounted in the Apprentice 3 panel with a push-on connector interface and a single screw.

Features

General Information

- UL Listed
- Mounts in the panel with a push-on connector and a single screw.

High Voltage Characteristics

- Contacts area latching DPST
- NO (Normally Open) contacts
- Screw type terminals handle #10AWG solid or stranded copper wire

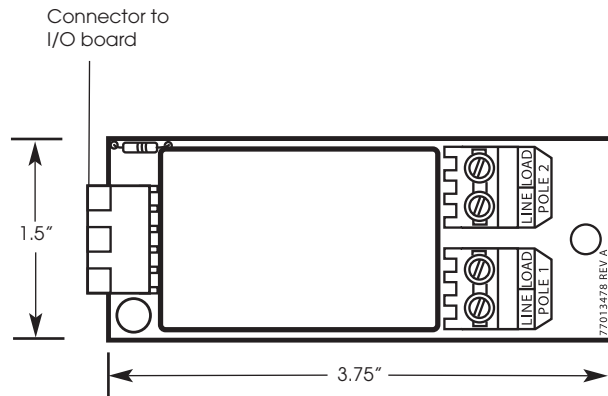
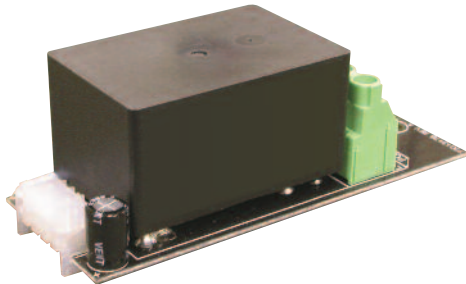


INTELLIGENT LIGHTING
CONTROLS, INC.

5229 Edina Industrial Boulevard
Minneapolis, Minnesota 55439
Phone 952 829 1900
FAX 952 829 1901
1-800-922-8004
www.ilc-usa.com

2-Pole Relay Board

Dimensions



Specifications

Physical:

- 3.75"W x 1.5"H x 1.3"D
- Plug-in module designed for mounting directly to Apprentice 3 I/O board(s)

Electrical:

- 16 amp electronic ballast
- 16 amp ballast
- 16 amp resistive
- 16 amp general
- 50 to 60 Hz
- Up to 347 VAC per pole controlling 208/240/480 VAC circuits

Operating Environment:

- Location Interior space
- Operating Temperature 0° to 40° C
- Relative Humidity 10% to 90% Non-condensing
- Atmosphere Non-explosive, Non-corrosive
- Vibration Stationary application NEMA Level A

Certifications:

- UL CUL
- FCC approval for commercial and residential use

NOTE: The High Voltage barrier in the panel needs to be replaced with the installation of the 2 pole relay. Order part number 78001567 for the 4 size panel, 78001568 for the 8 and 16 size, or 78001608 for the 32 size.

How to Order

Ordering a **2 Pole Relay Board**
Order No. AP3-2PR (sample)

AP3-2PR



INTELLIGENT LIGHTING
CONTROLS, INC.

5229 Edina Industrial Boulevard
Minneapolis, Minnesota 55439
Phone 952 829 1900
FAX 952 829 1901
1-800-922-8004
www.ilc-usa.com