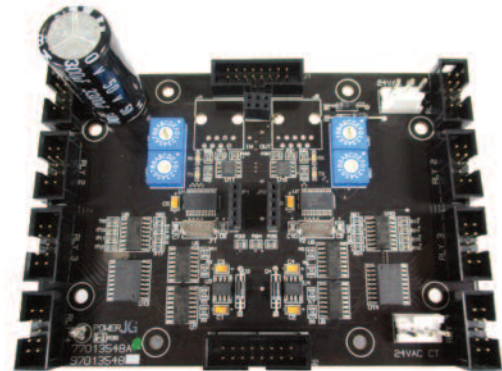




- Controls R40-1 single pole relays
- 8 relay outputs per module
- Addressable for right or left control numbering
- Optically isolated output drivers protect electronics
- Easy installation into panel
- Ribbon connectors for interconnecting relays
- Interface connector for LightSync Input Board
- Made in the USA



## Overview

The LightLEEDer Addressable Relay Driver Module consists of the electronics that drives the R40 relays. This driver module is addressable, so relay numbering can be on the left side or the right side only, or on both sides. Each module has built in optical isolation and is designed to control up to 4 single pole relays per side. Each 4-relay side output is independently addressed, giving you the flexibility to number them as needed. They are provided with push-on type connectors with no wires to terminate. Modules are also available in a remote mount option, which could eliminate a controller in another panel to reduce cost. Every module has power and communications status LED indicators for easy diagnostics.

## Features

### General Information:

- **Made in the USA**
- **Controls** R40-1 single pole relays
- **Addressable** for right and left side
- **Easy installation** into LightLEEDer panels
- **8 relay outputs** per module, 4 per side
- **Relays connect** with a push-on ribbon cable
- **LightSync input** module mounting and interface
- **Data connectors** are a push-on ribbon type
- **Power LED** indicator for quick diagnostics
- **Optically isolated outputs** for protecting electronics
- **Remote** option available

### LightSync Device Ready:

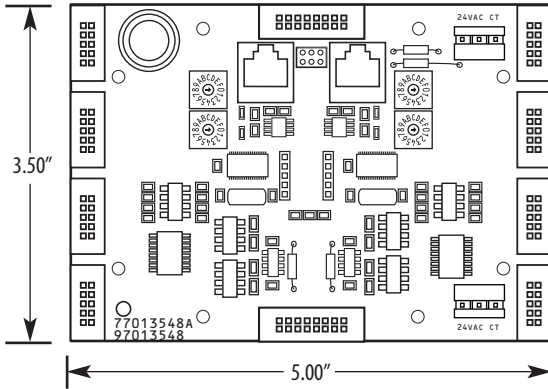
- **Input module** interface
- **Occupancy module** interface
- **Dimming module** interface

### Relays:

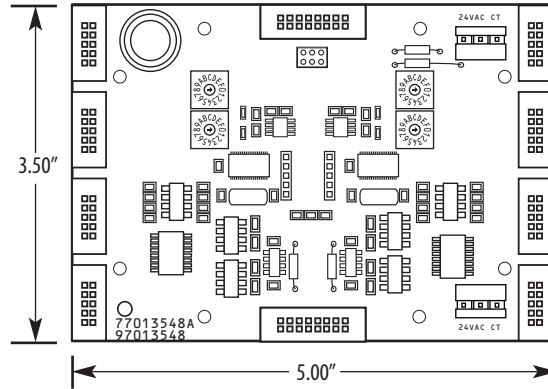
- **Operates** R40-1 single pole relays



## Physical



Remote Mount



Panel Mount

## Specifications

### Safeguards:

- Optic isolation to protect electronics

### Physical:

- 5" wide X 3.5" High
- Push-on ribbon cable connectors for each relay
- Push-on ribbon cable connectors for data in and out connections
- Push-on power inputs and outputs
- LED power status indicator

### Electrical:

- 24 VAC supplied from the panel

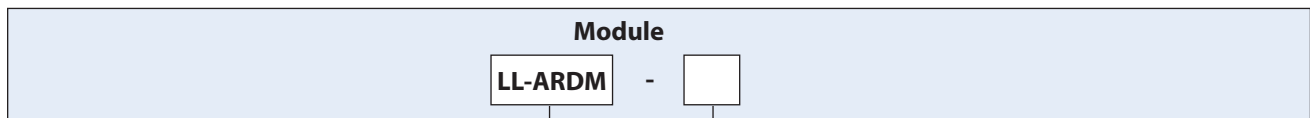
### Operating Environment:

- Location: Interior space
- Operating Temp: 0°-50° C
- Humidity: 10%-90% Non-condensing
- Atmosphere: Non-explosive/corrosive
- Vibration: Stationary

### Certifications and Approvals:

- UL CUL
- FCC Part 15

## Ordering



Series: LightLEEDer  
Addressable Relay  
Driver Module

Mounting:  
Blank= Panel  
R= Remote