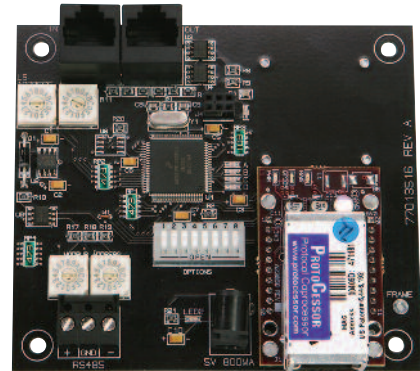




- BAS interface for LightSync inputs
- Emulates switch inputs and photocells
- Direct control for Building Automation System
- Connect with BACnet, Modbus, LonWorks, or Metasys N2
- Panel programmed as an actual device
- Supports all standard input options
- Made in the USA



Add-Ons

## Overview

The LightLEEDer Serial Interface Input Control Module can be added to any LightLEEDer panel to provide LightSync device emulation from any building automation system using BACnet IP, BACnet MSTP, Modbus RTU, Modbus ASCII, Modbus TCP, LonWorks, ILC ASCII, or Metasys N2 serial protocol. With the panel module, commands can be sent to the panel to trigger inputs ON and OFF, force photocell levels to drive dimming outputs, and read status of pilots and photocell levels. Inputs are mapped through the panels keypad or with LightLEEDer Pro software.

## Features

### General Information:

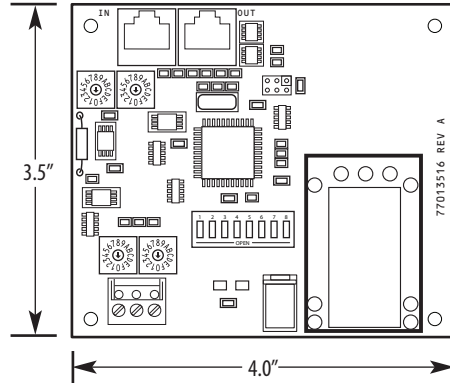
- **Direct communications** for BAS control of LightSync input points
- **Made in the USA**
- **Emulates** LightSync inputs and analog photocells
- **Status** (pilots) of relays, groups, presets, and photocell levels
- **Installs directly** into any panel or remotely on the LightSync network
- **Extractable files** from BACnet and LonWorks modules
- **Control** from 1 to 8 LightSync devices per module
- **Points** for up to 64 inputs with photocells using 8 inputs per
- **Adjustable** from baud rate

### Protocols:

- **BACnet IP**– an ASHRAE protocol communicating on a TCP/IP network
- **BACnet MSTP**– an ASHRAE protocol communicating on a RS485 network
- **Modbus RTU**– a Modicon protocol communicating on RS485 in a binary coded format
- **Modbus ASCII**– a Modicon protocol communicating on RS485 in an ASCII coded format
- **Modbus TCP**– a Modicon protocol communicating on a TCP/IP network
- **LonWorks**– an Echelon protocol communicating on a 2 wire data line
- **Metasys N2**– a Johnson Controls protocol communicating on RS485
- **ILC ASCII**– an ILC open protocol communicating RS232 in a ASCII coded format



**Physical**



NOTE: Physical appearance may vary between protocols.

**Specifications**

**Physical:**

- 4" Wide X 3.5" High
- Connectors for interface to LightLEEDer network
- RJ45 connectors for Ethernet based communications
- Removable screw connectors for data line communications
- Rotary and dip switches for addressing and configuring

**Electrical:**

- Powered from the panel
- 5 VDC power supply provided

**Operating Environment:**

- Location: Interior space
- Operating Temp.: 0° to 50° C
- Humidity: 10% - 90% Non-condensing
- Atmosphere: Non-explosive/corrosive
- Vibration: Stationary

**Certifications and Approvals:**

- FCC Part 15

**Ordering**

