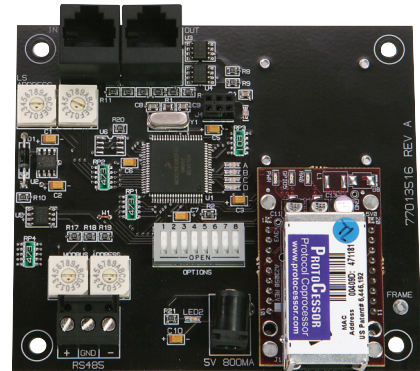




LIGHT *Sync* SIICM

Serial Interface
Input Control Module

- BAS interface for LightSync inputs
- Emulates switch inputs and photocells
- Direct control for Building Automation System
- Connect with BACnet, Modbus, LonWorks, or Metasys N2
- Panel programmed as an actual device
- Supports all standard input options
- Made in the USA



Overview

The LightLEEDer Serial Interface Input Control Module can be added to any LightLEEDer panel to provide LightSync device emulation from any building automation system using BACnet IP, BACnet MSTP, Modbus RTU, Modbus ASCII, Modbus TCP, LonWorks, or Metasys N2 serial protocol. With the panel module, commands can be sent to the panel to trigger inputs ON and OFF, force photocell levels to drive dimming outputs, and read status of pilots and photocell levels. Inputs are mapped through the panels keypad or with LightLEEDer Pro software.

Features

General Information:

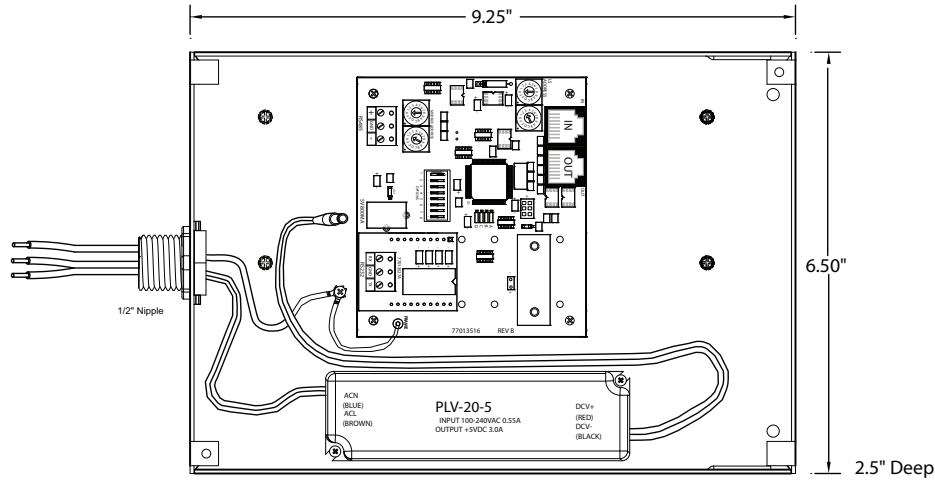
- **Direct communications** for BAS or AV system control of LightSync input points
- **Made in the USA**
- **Emulates** LightSync inputs and analog photocells
- **Status** (pilots) of relays, groups, presets, and photocell levels
- **Installs directly** into LightSync network using LightSync device addresses
- **Extractable files** from BACnet and LonWorks modules
- **Control** 1-64 LightSync devices
- **Adjustable** Modbus baud rate

Protocols:

- **BACnet IP**– an ASHRAE protocol communicating on a TCP/IP network
- **BACnet MSTP**– an ASHRAE protocol communicating on a RS485 network
- **Modbus RTU**– a Modicon protocol communicating on RS485 in a binary coded format
- **Modbus ASCII**– a Modicon protocol communicating on RS485 or RS232 in an ASCII coded format
- **Modbus TCP**– a Modicon protocol communicating on a TCP/IP network
- **LonWorks**– an Echelon protocol communicating on a 2 wire data line
- **Metasys N2**– a Johnson Controls protocol communicating on RS485



Physical



NOTE: Physical appearance may vary between protocols.

Specifications

Physical:

- NEMA1 enclosure 6.5" W x 9.25" L x 2.5"D
- 6" Power leads 120V
- 1/2" Conduit nipple for connection to junction box
- RJ45 connectors for interfacing to LightSync network
- Ethernet terminal with RJ45 for IP interface
- Removable screw down connectors for RS485 or RS232 data communication
- Rotary and dip switches for addressing and configuring
- Mounting holes provided
- Plenum rated enclosure

Electrical:

- Powered from the panel
- 5 VDC power supply provided

Operating Environment:

- Location: Interior space
- Operating Temp.: 0° to 50° C
- Humidity: 10% - 90% Non-condensing
- Atmosphere: Non-explosive/corrosive
- Vibration: Stationary

Certifications and Approvals:

- FCC Part 15
- UL, CUL

Ordering

