



# LIGHT *Sync* LS

## Classic Data Line Switch

- Data line pushbutton switch station
- Made in the USA
- 1 to 6 button configuration
- Architectural design with matching screwless cover
- Status indicators for true relay, group or preset status
- Mounts in a standard single gang electrical box
- Engraved button identification available
- Hardwired version available



Standard cover



Optional painted steel plate with visible screws



Optional stainless steel screwless plate

## Overview

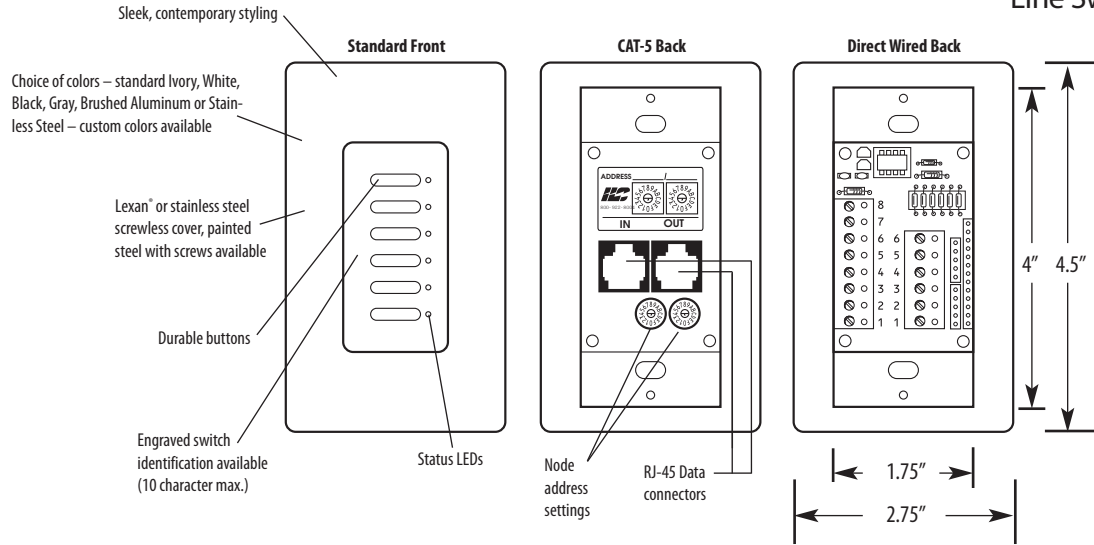
The LightSync classic data line pushbutton switch station offers a flexible switch that will meet your lighting needs. Switch stations are available with 1 to 6 pushbuttons and have a status LED associated with each button. Each button may be individually programmed to control any relay(s), group(s) or preset(s) throughout the network. Switch faceplates are available in four colors, plus stainless steel and brushed aluminum.

## Features

- **Data line** pushbutton switch station
- **Made** in the USA
- **Buttons range** from 1 to 6 per station
- **Audible** switch beep upon activation
- **Program** each button to control any relay(s), group(s) or preset(s)
- **Status LEDs** for indicating the true state of a relay, group or preset
- **Faceplates** are available in white, ivory, gray, black, stainless steel and brushed aluminum
- **Mounts** in a standard single gang box
- **Engraving** is available for switch identification
- **Remote mount** anywhere on the LightSync network
- **Self powered** from the network
- **RJ45 connectors** provided for easy connection
- **Addressable** rotary switches
- **Decora**<sup>®</sup> style matching switch plate provided



### Physical



### Specifications

#### Physical:

- Standard single gang mounting
- Digital addressing switches
- RJ45 connectors provided for easy connection
- Screw or screwless plates available
- Mounting screws provided
- Laser engraving available, up to 10 characters
- Available in ivory, white, black, gray, stainless steel and brushed aluminum

#### Switch Plates:

- Lexan® (screwless)
- Brushed Aluminum (visible screws)
- Stainless Steel (screwless/visible screws)
- Painted (visible screws)

#### Electrical:

- Powered the from panel or LightSync network

#### Operating Environment:

- Location: Interior space
- Operating Temp.: 0° to 50° C
- Humidity: 10% - 90% Non-condensing
- Atmosphere: Non-explosive/corrosive
- Vibration: Stationary

#### Certifications and Approvals:

- UL
- FCC Part 15

### Ordering (Contact factory for available custom color and options.)

