



- Provides single point control interface between systems using MODBUS control protocol and ILC's LightMaster network
- Uses standard ASCII or RTU control protocol
- Connect directly to the MODBUS RS 485 bus
- Used in LightMaster Standard or Extended Networks
- Allows status reporting and direct control of relays
- Adjustable protocol settings
- RJ45 connectors for LightMaster data line cable
- Custom configurations available



Overview

The ILC LightMaster MODBUS Gateway provides a gateway between a Building Automation System (BAS) that uses the MODBUS communications protocol and the ILC LightMaster network via standard CAT-5 cable. The host system can then poll the status of the networked LightMaster Controller's inputs, poll status of relay groups and issue ON/OFF commands to the LightMaster's network panels.

Features

Configuration

- The MODBUS card (located on the LightMaster Gateway's processor board) can be addressed from 1 to 255
- Once plugged into the lighting control panel, MODBUS setup options can be programmed and reviewed directly from the LightMaster keypad or software

Adjustable Protocol Settings

- Protocol: ASCII or RTU
- Baud rate: 4800, 9600, 19200 or 38400
- Parity adjustment: ODD, EVEN, or NONE

For more information refer to Modicon Modbus Protocol Reference Guide (PI-MBUS-300)

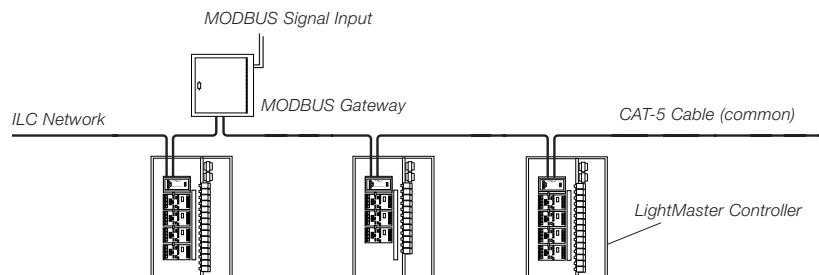
Supported Commands

- 01 Read coil status
- 02 Read input status
- 05 Force single coil
- 15 Force multiple coils

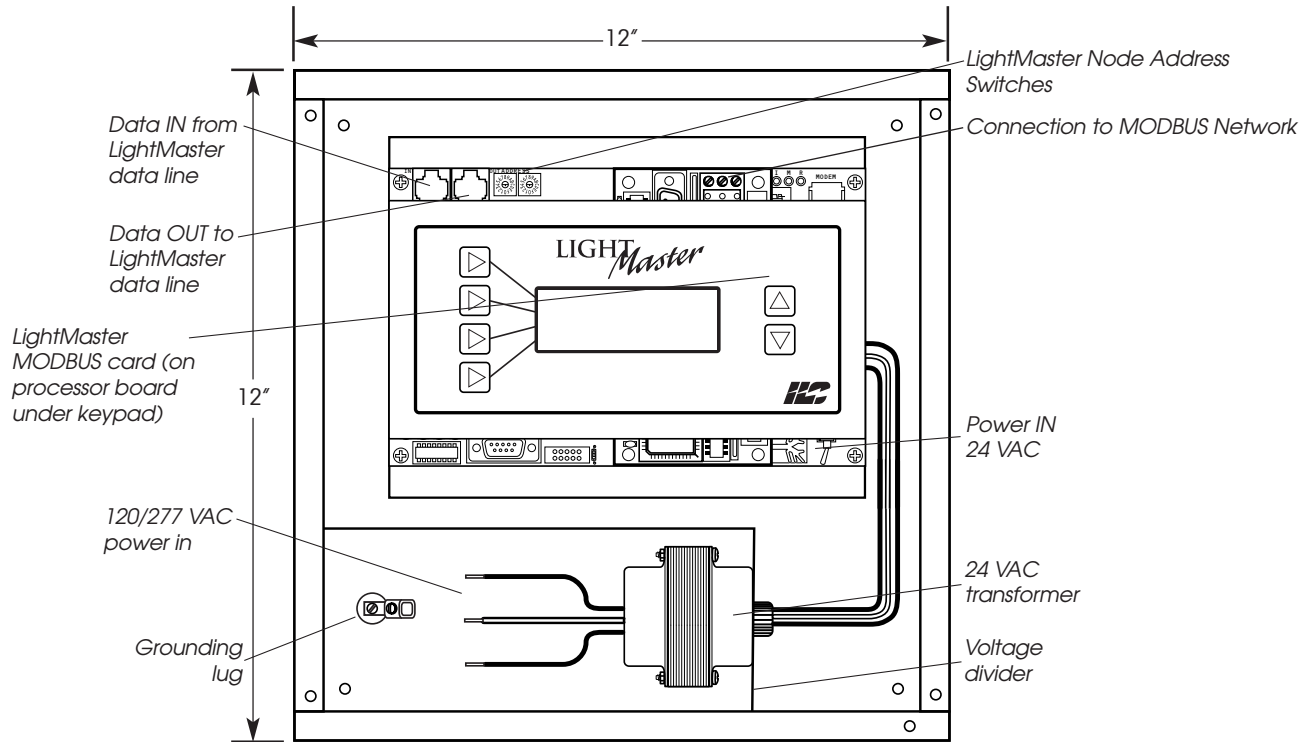
FOR USE IN
SN EN
LIGHTMASTER NETWORKS

INTELLIGENT LIGHTING
CONTROLS, INC.

5229 Edina Industrial Boulevard
Minneapolis, Minnesota 55439
Phone 952 829 1900
FAX 952 829 1901
1-800-922-8004
www.ilc-usa.com



Gateway Level MODBUS Connection



LightMaster MODBUS Gateway (shown in NEMA-type enclosure with transformer)

Specifications

Physical:

- Mounted in standard NEMA 12" x 12" x 4" enclosure, contact factory for custom configurations

Operating Environment:

- Location Interior space
- Operating Temperature 0° to 50° C (32° to 112° F)
- Relative Humidity 10% to 90%
Non-Condensing

Certifications:

- UL

Configuration:

- DIP switch and soft configuration for Protocol Type, Baud Rate and Parity

How to Order

Ordering a **LightMaster MODBUS Gateway**

Order No. LMNG - M - SN (sample)

LMNG - M -

Standard
 Network (SN)
 Extended
 Network (EN)

INTELLIGENT LIGHTING
 CONTROLS, INC.

5229 Edina Industrial Boulevard
 Minneapolis, Minnesota 55439
 Phone 952 829 1900
 FAX 952 829 1901
 1-800-922-8004
 www.ilc-usa.com