



# LIGHT *Master* PRO

Windows®-based  
Programming, Control, Monitoring & Status

- Windows-based lighting control software
- 3 versions: Stand Alone, Standard Network and Extended Network
- Graphical forms and controls provide the ultimate in simplicity and usability
- Simple Point and Click commands
- Back up controller programming to a PC
- Real Time programming, control, monitoring & status
- Communicate with multiple controllers at once
- Simple RS232 or modem communications



## Overview

LightMaster Pro Windows-based lighting control software offers the ultimate in flexibility and ease of use. Through the use of graphical control forms and simple point and click command the system user can quickly and easily program LightMaster lighting controllers for any required application. Simply connect a RS232 cable between your PC and a LightMaster controller and that's it! You're ready to program, control, monitor or get the status of any switch input or relay output anywhere in the control system. LightMaster Pro's built in modem communications capabilities mean you can connect to a controller equipped with a modem via a standard telephone line for off site programming, control, monitoring and status. You can even make programming changes while not connected to any controllers at all and then simply download your preprogrammed setting to your controllers at any time you desire. LightMaster Pro software makes an excellent addition to any LightMaster lighting control system.

## Features

### LightMaster Pro Stand Alone software

- Graphical forms and controls
- Simple Point and Click commands
- Programming, control, monitoring and status
- Simple RS232 or Modem Communications
- Upload /download operating parameters between the controllers and your personal computer (PC).
- Provides a means to back up lighting control settings to a PC

### LightMaster Pro Standard Network adds:

- Downloads to multiple controllers at once
- Built-in LAN programming and control for up to 32 LightMaster controllers
- Program LightSync devices on network

### LightMaster Pro Extended Network adds:

- Network Manager programs up to to 128 LightMaster panels
- Programs up to 254 LightSync devices per network

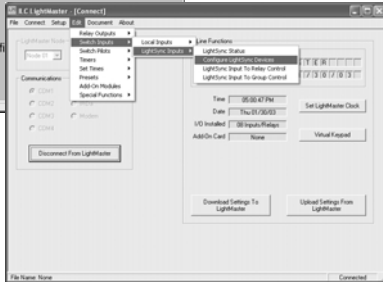


INTELLIGENT LIGHTING  
CONTROLS, INC.

5229 Edina Industrial Boulevard  
Minneapolis, Minnesota 55439  
Phone 952 829 1900  
FAX 952 829 1901  
1-800-922-8004  
www.ilc-usa.com



Home Screen



Configure Devices from a PC

## System Requirements

- Pentium III 750 MHz or greater
- 1 RS232 port
- Windows 2000 or XP
- CD drive
- 512 MB RAM
- SVGA monitor
  - 800 X 600 min 1024 X 768 recommended
- Mouse & Keyboard or Touch Screen
- Optional:
  - Touch Screen Monitor
  - Modem for remote connection via telephone line
  - Ethernet network adapter for connection of multiple stations or InSite-LM Graphic Control Stations

## Specifications

### Programming

- Program, Edit or Review
  - Switch Input to Relay Output mappings
  - Switch Input properties
  - Relay output properties
  - Time scheduled events (Timers)
- Work Online (connected to a controller or network) or Offline (not connected)

### Control

- Use simple Point and Click command to control relay outputs directly from your P.C.

### Monitoring

- Monitor Status of any Switch Input or Relay Output anywhere on the control network

### Status

- View real time status of switch inputs and relay outputs in a clear easy to understand graphical format

### Connection Options

- Connect your Windows based P.C. in any of the following manners
  - Serial RS232 communication port
  - LAN RS484 (requires optional LightMaster Programming Access Kit )
  - Telephone (requires P.C. modem)
  - Work Offline (not connected to any controller)

INTELLIGENT LIGHTING  
CONTROLS, INC.

5229 Edina Industrial Boulevard  
Minneapolis, Minnesota 55439  
Phone 952 829 1900  
FAX 952 829 1901  
1-800-922-8004  
www.ilc-usa.com

## How to Order

Ordering **LightMaster Pro**  
Order No. LM-WIN-PRO - SN (sample)

**LM-WIN-PRO-** \_\_\_\_\_

Version:  
Stand Alone (SA),  
Standard Network (SN),  
Extended Network (EN)