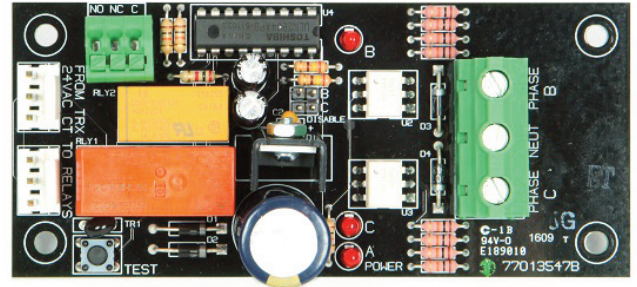


## LightLEEDer

## UL924 Phase Monitor Module

## Overview

The UL924 Phase Monitor Module (PMM) is used in conjunction with the UL924 Relay Bypass Output Module, and controls the bypass operation if any of the monitored normal electrical phases loses power. It can be configured to monitor 2 or 3 phases. This module mounts in place of 2 R40 relays in the LightLEEDer panel. A test switch is provided to test this board, along with the UL924 Relay Bypass Output Modules in the panel. Auxiliary NO and NC dry contact outputs provided for signaling other devices and systems.



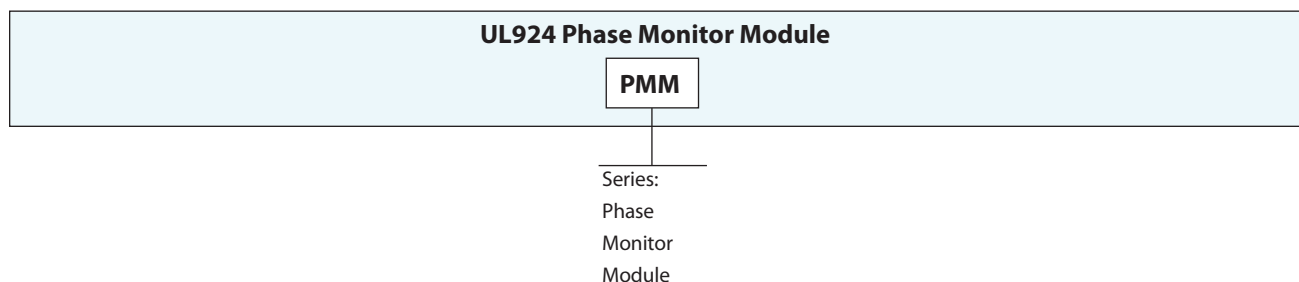
## Features

- **Made in the USA**
- **Digital CAT-5 Ready**
- **Monitors** 2 or 3 phases for loss of power
- **Controls** UL924 Relay Bypass Output Modules
- **Test** switch and LED status indicators
- **PMM monitors** 120 to 347VAC
- **Optically** isolated power inputs
- **Mounts** in place of 2 relays in the panel
- **Barriers** provided for high voltage
- **Dry contact** NC/NO outputs provided for signaling other systems of a power loss

## Warranty

Five-year limited warranty

## Ordering

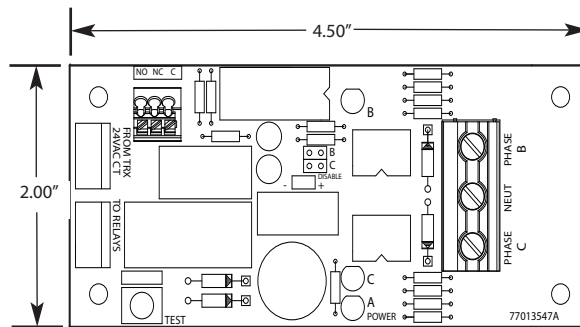


PMM  
2-12-24 Rev.D

## LightLEEDer

## UL924 Phase Monitor Module

## Physical



## Specifications

**Physical:**

- 4.5" wide X 2.0" high
- Push-on connectors for power transformer
- Screw type power phase inputs
- Push-to-connect auxiliary signal connectors
- Phase selection jumpers
- LED phase status indicators
- Test switch

**Electrical:**

- 120/277/347VAC

**Operating Environment:**

- Location: Interior space
- Operating Temperature: 0° to 50° C
- Humidity: 10% - 90% Non-condensing
- Atmosphere: Non-explosive/corrosive
- Vibration: Stationary